



Please note that renderings are for illustration purposes only and may not reflect exact choices & inclusions in project contract.

Lockwood Brothers
CONSTRUCTION

CUSTOMER:

THE HELLCLIFF HEIGHTS



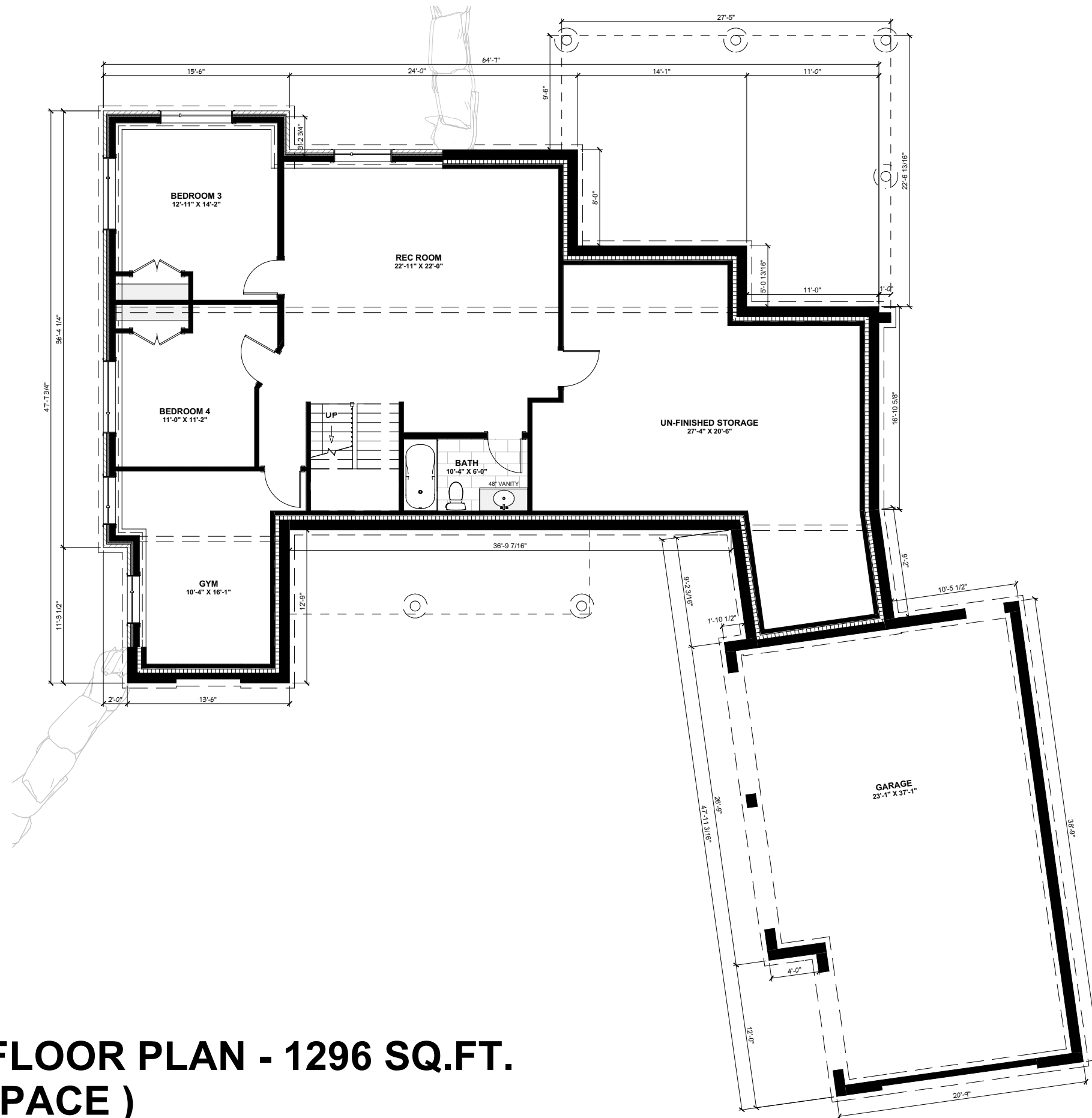
KITCHEN



LIVING



DINING



**BASEMENT FLOOR PLAN - 1296 SQ.FT.
(FINISHED SPACE)**

**Lockwood Brothers
CONSTRUCTION**

CUSTOMER:
THE HELLCLIFF HEIGHTS

