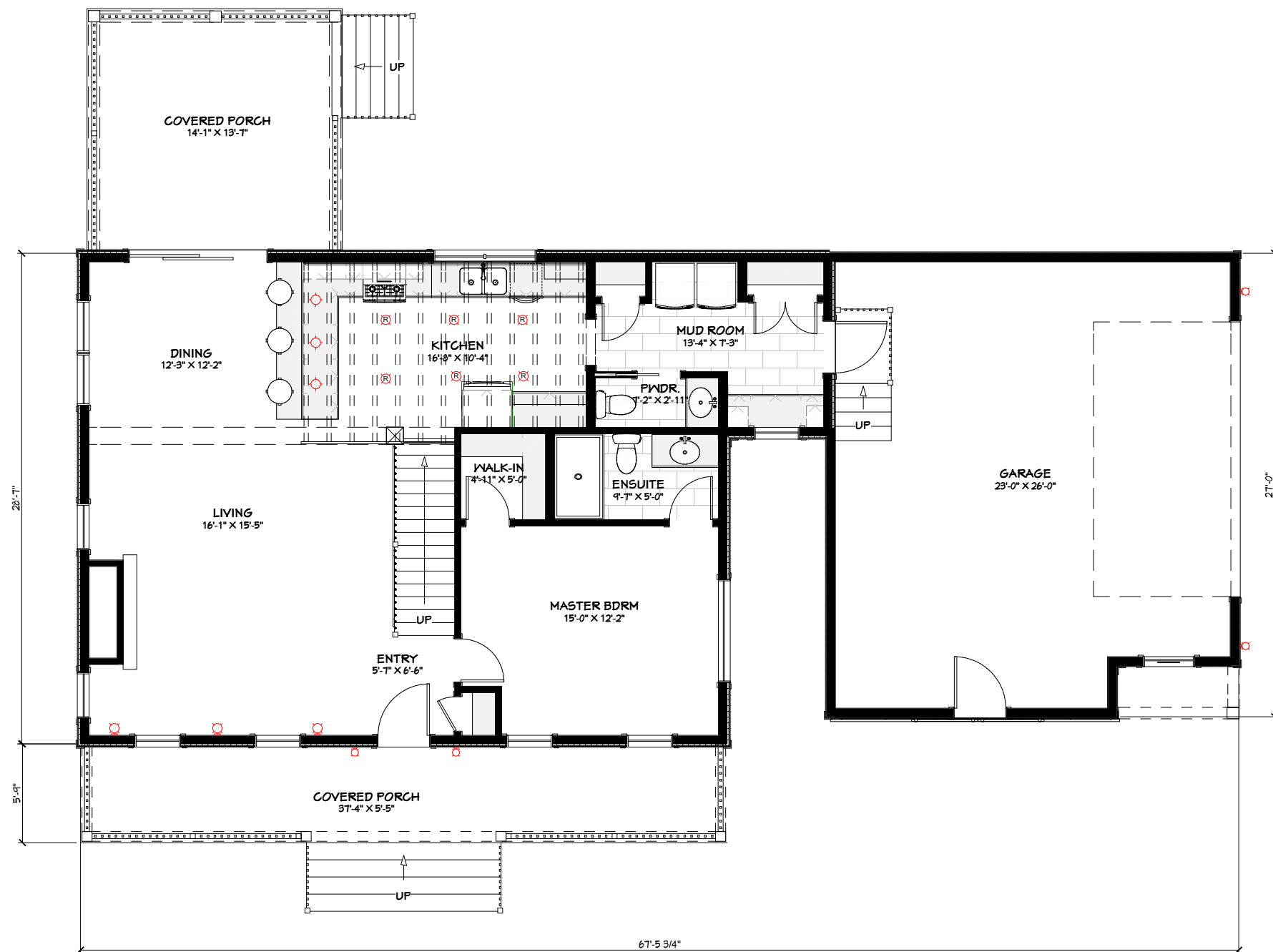


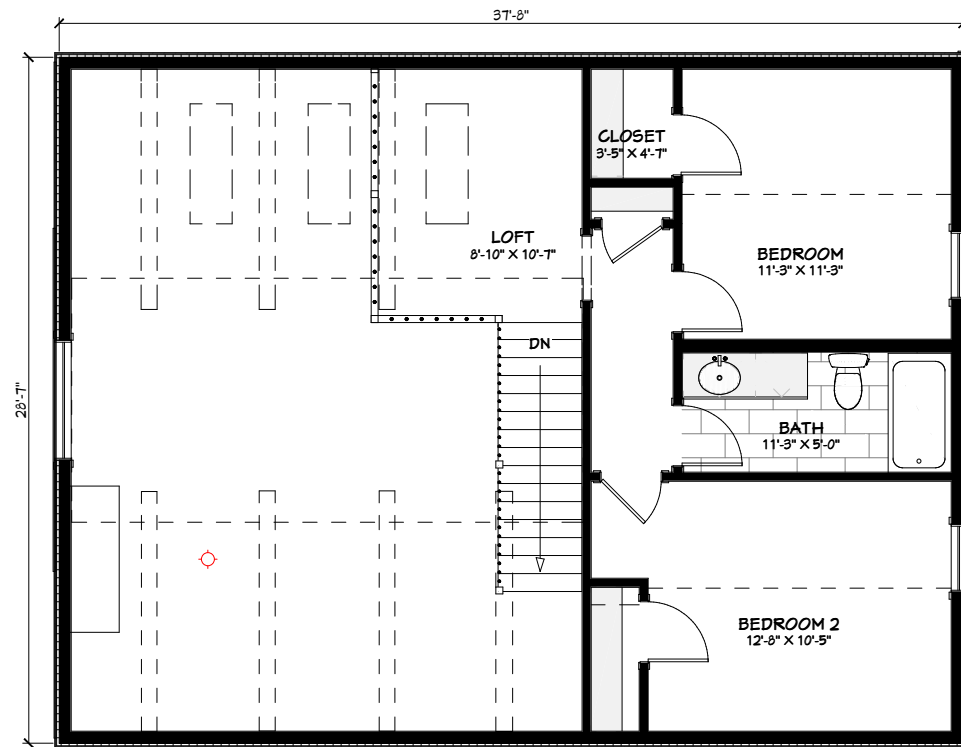


**Lockwood Brothers
CONSTRUCTION**

DRAWING NAME:
THE DORNEY



GROUND FLOOR PLAN = 1150 SQ.FT.
 SECOND FLOOR = 550 SQ.FT.
 TOTAL = 1700 SQ.FT.



SECOND FLOOR PLAN = 550 SQ.FT.

GROUND FLOOR = 1150 SQ.FT.

TOTAL = 1700 SQ.FT.

**Lockwood Brothers
CONSTRUCTION**

DRAWING NAME:

THE DORNEY