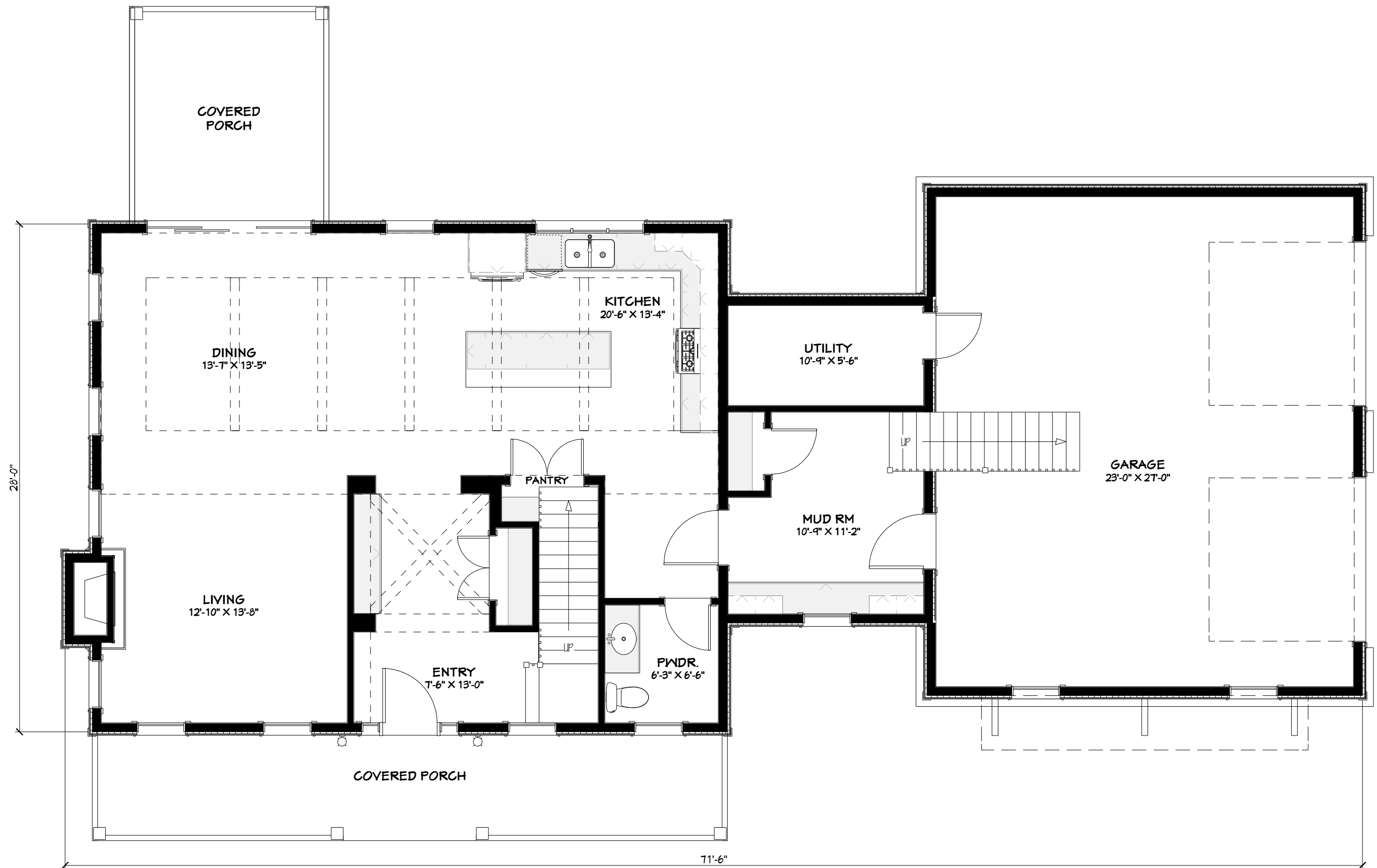




**Lockwood Brothers
CONSTRUCTION**

DRAWING NAME:
THE TANGLIN



GROUND FLOOR PLAN = 1185 SQ.FT.

SECOND FLOOR PLAN = 950 SQ.FT.

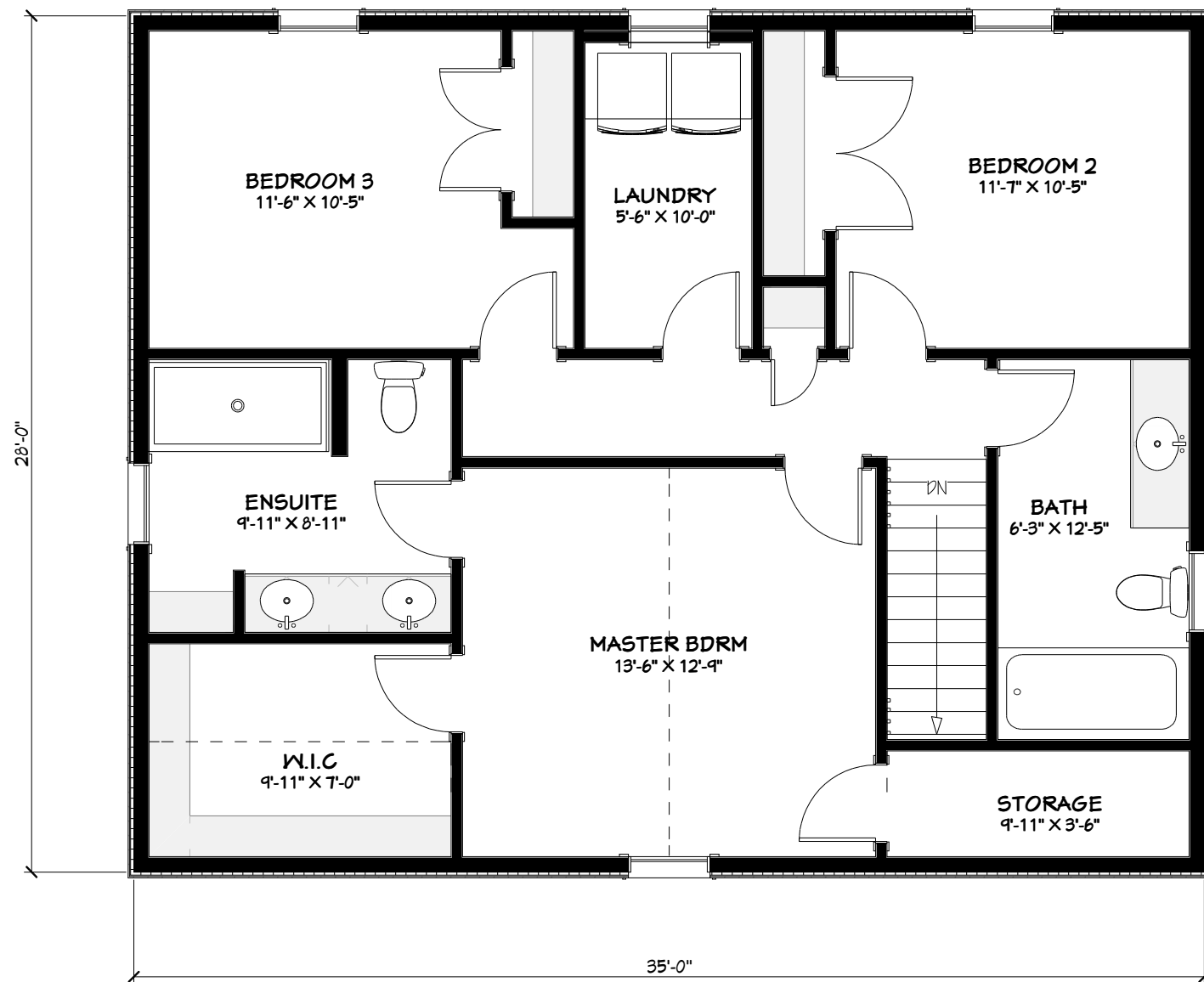
LOFT = 410 SQ.FT.

TOTAL = 2545 SQ.FT.

**Lockwood Brothers
CONSTRUCTION**

DRAWING NAME:

THE TANGLIN

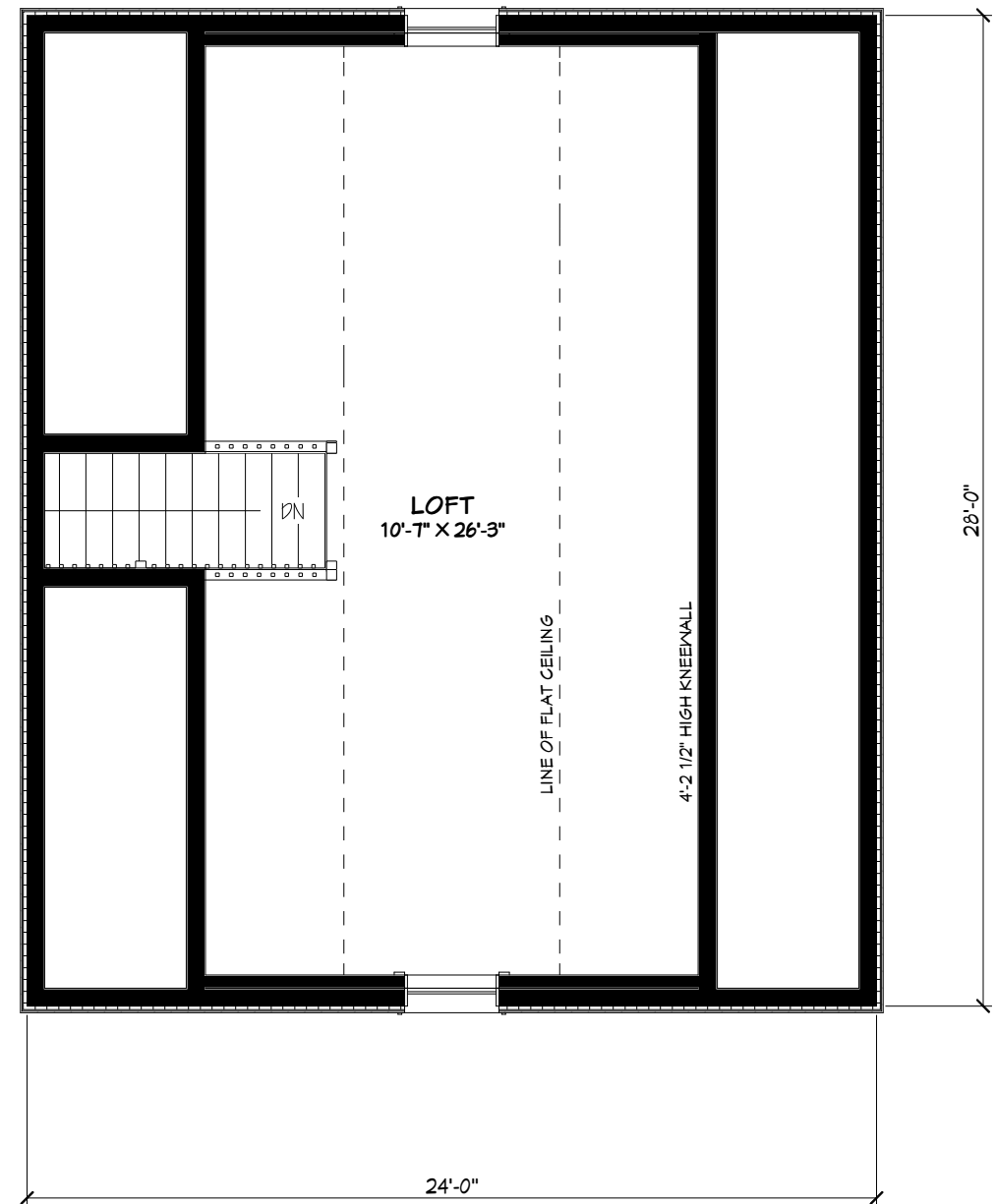


SECOND FLOOR PLAN = 950 SQ.FT.

GROUND FLOOR PLAN = 1185 SQ.FT.

LOFT = 410 SQ.FT.

TOTAL = 2545 SQ.FT.



**Lockwood Brothers
CONSTRUCTION**

DRAWING NAME:

THE TANGLIN

LIVING



KITCHEN

Lockwood Brothers
CONSTRUCTION

DRAWING NAME:
THE TANGLIN